



— GOATMEAT —

Australia is a relatively small producer of goatmeat but is the world leader in goatmeat exports. Goatmeat is the most widely consumed meat in the world due to it being traditionally eaten by many cultures around the world. Traditionally, the Australian goatmeat industry comprises both farmed and rangeland goats for meat production.

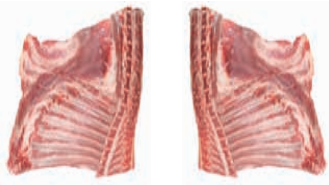
GOATMEAT PRIMAL CUTS

CARCASE 4640 / CARCASE PIECES
(SIX WAY CUT)

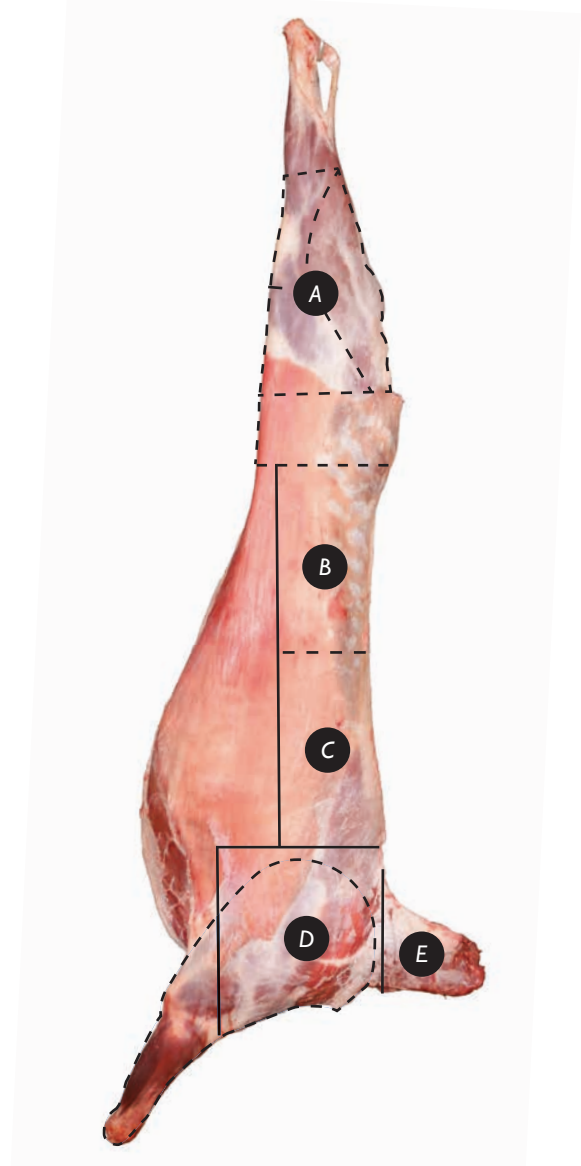
A LEG



B **C** LOIN



D **E** FOREQUARTER



C

CUBED PIECES 5037



RACK 4932



RACK CAP ON (Frenched) 4756



RACK CAP OFF (Frenched) 4764



D

SQUARE CUT
SHOULDER 4990



SHOULDER - SQUARE CUT
(Rolled / Netted) 5050



SHOULDER -
OYSTER CUT 4980



SHOULDER -
BANJO CUT 4995

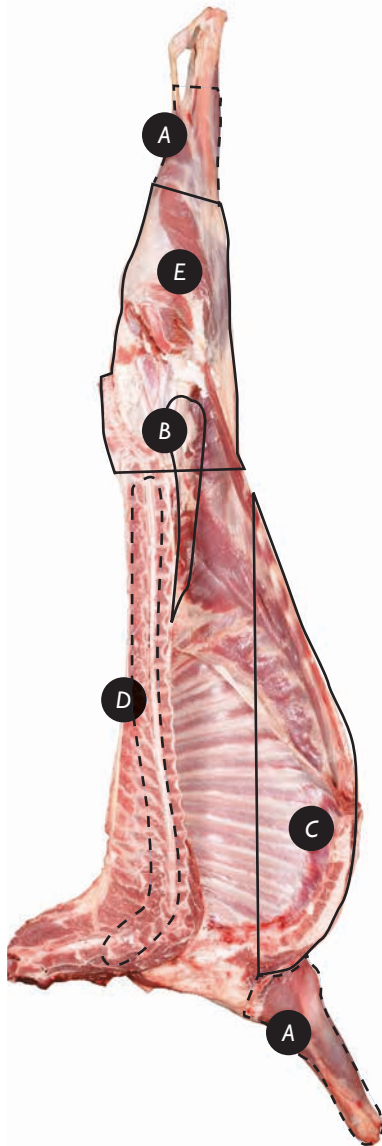


E

NECK 5020



GOATMEAT PRIMAL CUTS



A

FORESHANK 5030

FORESHANK
(Frenched) 5029



HINDSHANK 5031

HINDSHANK
(Frenched) 5029



B

TENDERLOIN 5080



TENDERLOIN
BUTT OFF 5082

BUTT TENDERLOIN
5081



D

BACKSTRAP 5109

EYE OF LOIN 5142



C

BREAST AND FLAP 5010



E

LEG - CHUMP ON
4800

LEG - CHUMP OFF
4820

LEG CHUMP ON (ABR)
4801

LEG SHANK BONE/
EASY CARVE 4821



— GOATMEAT —



GOAT CARCASS SKIN ON

4640

GOAT CARCASS SKIN OFF

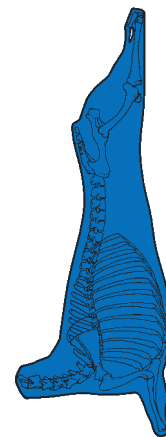
4642

Carcass Skin On or Skin Off includes all parts of the body skeletal musculature and bone, extending to and including the hock joint (tarsus) and knee joint (carpus), all cervical vertebrae and up to five coccygeal vertebrae. Carcass trim must comply with all government hygiene regulations that passes a carcass fit for human consumption and with the Australian meat industry agreed minimum trim requirements.

For further details of the minimum trim standard definition for Goatmeat carcass visit the AUS-MEAT web site.

Points requiring specification:

- Carcass can be prepared as agreed between the buyer and seller skin on or skin off.
- Variations to minimum trim standard definition (customer agreed variation).



OPTIONS



CARCASE PIECES

- Carcase cut into more than 2 (two) pieces will be described as: Carcase Pieces.
- Carcase cut into 6 pieces (Carcase Pieces 6 way cut).
- All primal cuts must be retained with the possible exception of the Tenderloin.

CARCASE SKIN-ON BROWN

A unique preparation of a skin on goat carcase, where the skin is subject to browning through extensive charring of the skin during processing

GOAT CARCASE – SKIN ON



GOAT CARCASE – SKIN OFF



CARCASE PIECES or 6 WAY CUT

